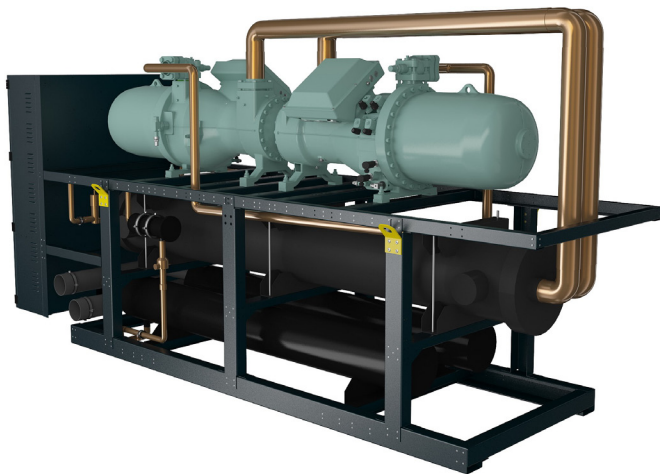


Watercooled \ Remote Condenser Chillers

BalticSCREW WATER

Watercooled or remote condenser screw chillers



Cooling capacity CW35/W7: 200-2500 kW

Compressors: Screw

Refrigerant: R134a, (R1234ze on request)

Condenser: Shell & Tube or remote

Evaporator: DX Shell & Tube

Basic version: EEV, RS485 Modbus, etc.

Key available options:

Low noise \ Touchscreen display \ LON, BACnet
\ Soft start \ Heat recovery \ Energymeter \
COP control \ etc.

iNVi - inverter screw available

CUSTOM Chillers

to customer requested specification



Cooling capacity CW35/W7: 5-3000 kW

Cabinet and piping: Standard, Stainless steel, etc.

Compressors: Screw, Scroll, Reciprocating
(inverter available)

Refrigerants: HFC (R410A, R134a, R404a, R407C,
etc.), HFO (R1234ze, R449A/XP40, etc.), Propane
(R290)

Condenser: BPHE, Shell&Tube, Remote

Evaporator: BPHE, Shell&Tube, Remote

Key applications:

Aggressive areas \ Industrial \ Refrigeration \
High and low ambient \ Special requirements \
etc.