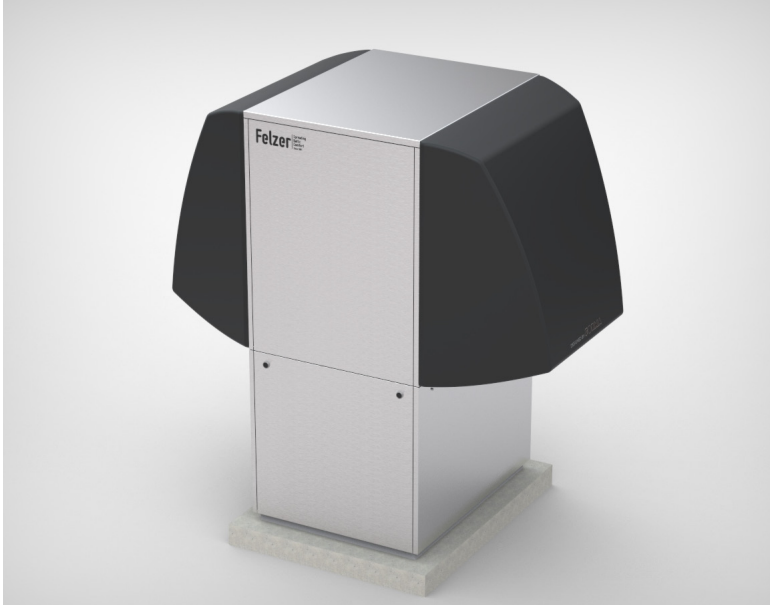


# Heat Pumps: Air To Water

## NordicLIGHT iNVi

Air to water low temperature inverter heatpump



Heating capacity A7/W35\*: 17 kW

Compressors: Inverter Scroll

Refrigerant: R410a

Fans: Axial

Condenser: BPHE

Evaporator: CuAl

Up to -20°C in heat pump mode

Up to -40°C in electrical heating mode

## AirONE HP

Air to water heatpump



Heating capacity A7/W35: 25-170 kW

Hot water temperature standard: upto +55°C

Hot water temperature HT: upto +65°C

Compressors: Scroll

Refrigerant: R410a

Fans: Axial

Condenser: BPHE

Evaporator: CuAl

Basic version: RS485 Modbus, etc.

Key available options:

Inverter or On-Off pump and tank kits \\ EC Fans  
\\ Axitop-type diffusors \\ Touchscreen display \\  
EEV \\ Low noise \\ Heat recovery \\ etc.

\* - A7/W35 = Ambient air temperature 7°C, User side leaving water temperature 35°C