

Heat pumps: Liquid to Water

WaterPLUS HPR

Heat recovery heat pump (source 20-40°C to water upto 78°C)



Heating capacity S40/W78*: 70-280 kW

Hot water temperature: upto +78°C

Compressors: Scroll

Refrigerant: R134a

Condenser: BPHE

Evaporator: BPHE

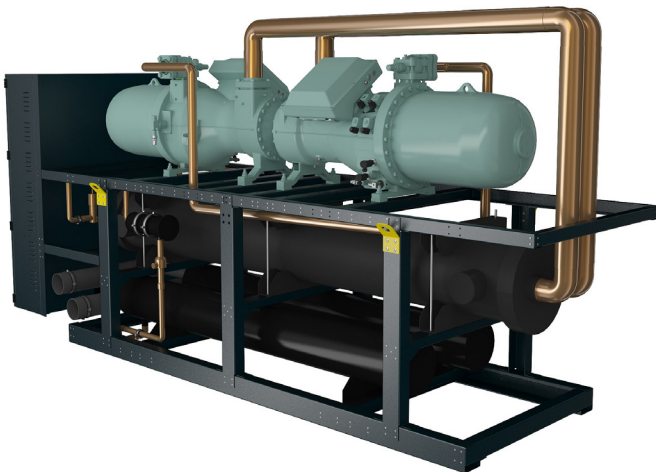
Already included: EEV, RS485 Modbus

Key available options:

Low noise \\ Touchscreen display \\ LON, BACnet
\\ Soft start \\ Heat recovery \\ Energymeter \\
COP control \\ Stainless steel water piping \\ etc.

BalticSCREW WATER HP

Watercooled screw heatpump



Heating capacity S7/W35: 190-2700 kW

Hot water temperature standard: upto +55°C

Hot water temperature HT: upto +65°C

Hot water temperature SHT: upto +78°C

Compressors: Screw (inverter on request)

Refrigerant: R134a, (R1234ze on request)

Condenser: DX Shell & Tube

Evaporator: Shell & Tube

Already included: EEV, RS485 Modbus

Key available options:

Low noise \\ Touchscreen display \\ LON, BACnet
\\ Soft start \\ Heat recovery \\ Energymeter \\
COP control \\ etc.

* - S40/W78 = Source side leaving water temperature 40°C, User side leaving water temperature 78°C