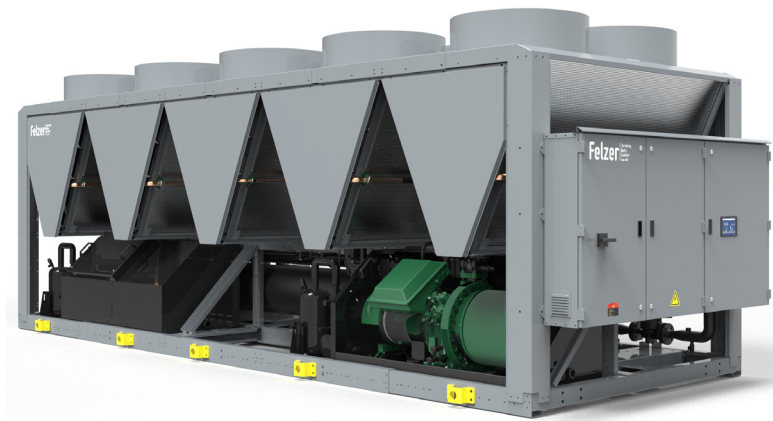


Aircooled Chillers \ Inverter Screw \ DX Screw

ScrewDRIVER iNVi

Aircooled inverter screw flooded evaporator chiller



Cooling capacity A35/W7: 170-1800 kW

Compressors: Screw Inverter

Refrigerant: R134a (R1234ze on request)

Fans: Axial

Condenser: Microchannel

Evaporator: Shell & Tube Flooded

Basic version: EEV, RS485 Modbus, etc.

Key available options:

Freecooling (all versions) \ High efficiency and low nose \ Inverter or On-Off pump and tank kits \ EC Fans \ Axitop-type diffusers \ Coils e-coating \ Touchscreen display \ Heat recovery \ etc.

BalticSCREW AIR

Aircooled screw DX evaporator chiller



Cooling capacity A35/W7: 170-1800 kW

Compressors: Screw

Refrigerant: R134a (R449A/XP40, R404a, R1234ze, etc. on request)

Fans: Axial

Condenser: Microchannel

Evaporator: DX Shell & Tube

Already included: EEV, RS485 Modbus

Key available options:

Freecooling (all versions) \ Upto -35°C without freecooling \ High efficiency and low nose \ Inverter or On-Off pump and tank kits \ EC Fans \ Axitop-type diffusers \ Coils e-coating \ Touchscreen display \ Heat recovery \ Soft start \ etc.